

# SUPPLEMENT

## Victorian Members of the Federal Parliament

### House of Representatives

The Victorian Members elected to the House of Representatives on 29 October 1969 and the divisions they represent are shown below:

Member	Division
WHITTORN, Raymond Harold ( <i>LP</i> ) .. .. .	Balaclava
ERWIN, Hon. George Dudley ( <i>LP</i> ) .. .. .	Ballaarat
GARRICK, Horace James ( <i>ALP</i> ) .. .. .	Batman
KENNEDY, Andrew David ( <i>ALP</i> ) .. .. .	Bendigo
SNEDDEN, Hon. Billy Mackie, Q.C. ( <i>LP</i> ) .. .. .	Bruce
JOHNSON, Leonard Keith ( <i>ALP</i> ) .. .. .	Burke
HOWSON, Hon. Peter ( <i>LP</i> ) .. .. .	Casey
KENT HUGHES, Hon. Sir Wilfred Selwyn, K.B.E., M.V.O., M.C., E.D. ( <i>LP</i> ) .. .. .	Chisholm
STREET, Anthony Austin ( <i>LP</i> ) .. .. .	Corangamite
SCHOLES, Gordon Glen Denton ( <i>ALP</i> ) .. .. .	Corio
JARMAN, Alan William ( <i>LP</i> ) .. .. .	Deakin
BROWN, Neil Anthony ( <i>LP</i> ) .. .. .	Diamond Valley
LYNCH, Hon. Phillip Reginald ( <i>LP</i> ) .. .. .	Flinders
McIVOR, Hector James ( <i>ALP</i> ) .. .. .	Gellibrand
NIXON, Hon. Peter James ( <i>CP</i> ) .. .. .	Gippsland
FOX, Edmund Maxwell Cameron ( <i>LP</i> ) .. .. .	Henty
GORTON, Rt Hon. John Grey ( <i>LP</i> ) .. .. .	Higgins
REID, Leonard Stanley, D.F.C. ( <i>LP</i> ) .. .. .	Holt
CHIPP, Hon. Donald Leslie ( <i>LP</i> ) .. .. .	Hotham
HOLTEN, Hon. Rendle McNeillage ( <i>CP</i> ) .. .. .	Indi
HAMER, David John, D.S.C. ( <i>LP</i> ) .. .. .	Isaacs
PEACOCK, Hon. Andrew Sharp ( <i>LP</i> ) .. .. .	Kooyong
CAIRNS, James Ford ( <i>ALP</i> ) .. .. .	Lalor
JESS, John David ( <i>LP</i> ) .. .. .	La Trobe
BUCHANAN, Alexander Andrew ( <i>LP</i> ) .. .. .	McMillan
TURNBULL, Winton George, C.B.E. ( <i>CP</i> ) .. .. .	Mallee
CASS, Moses Henry ( <i>ALP</i> ) .. .. .	Maribyrnong
CALWELL, Rt Hon. Arthur Augustus ( <i>ALP</i> ) .. .. .	Melbourne
CREAN, Frank ( <i>ALP</i> ) .. .. .	Melbourne Ports
McEWEN, Rt Hon. John, C.H. ( <i>CP</i> ) .. .. .	Murray
JENKINS, Henry Alfred ( <i>ALP</i> ) .. .. .	Scullin
FRASER, Hon. John Malcolm ( <i>LP</i> ) .. .. .	Wannon
BRYANT, Gordon Munro ( <i>ALP</i> ) .. .. .	Wills
KING, Robert Shannon ( <i>CP</i> ) .. .. .	Wimmera

## Recent Changes in Victorian State Parliament

### Legislative Council

#### *North Western Province*

The Hon. Sir Percy Byrnes resigned on 8 September 1969. At a by-election on 15 November 1969, the Hon. Bernard Phillip Dunn (*CP*) was elected in his stead.

### Legislative Assembly

#### *Reservoir District*

Dr H. A. Jenkins resigned on 18 September 1969 to contest a House of Representatives seat. Vacancy filled by Mr James Lionel Simmonds (*ALP*) the only candidate nominated on 27 October 1969.

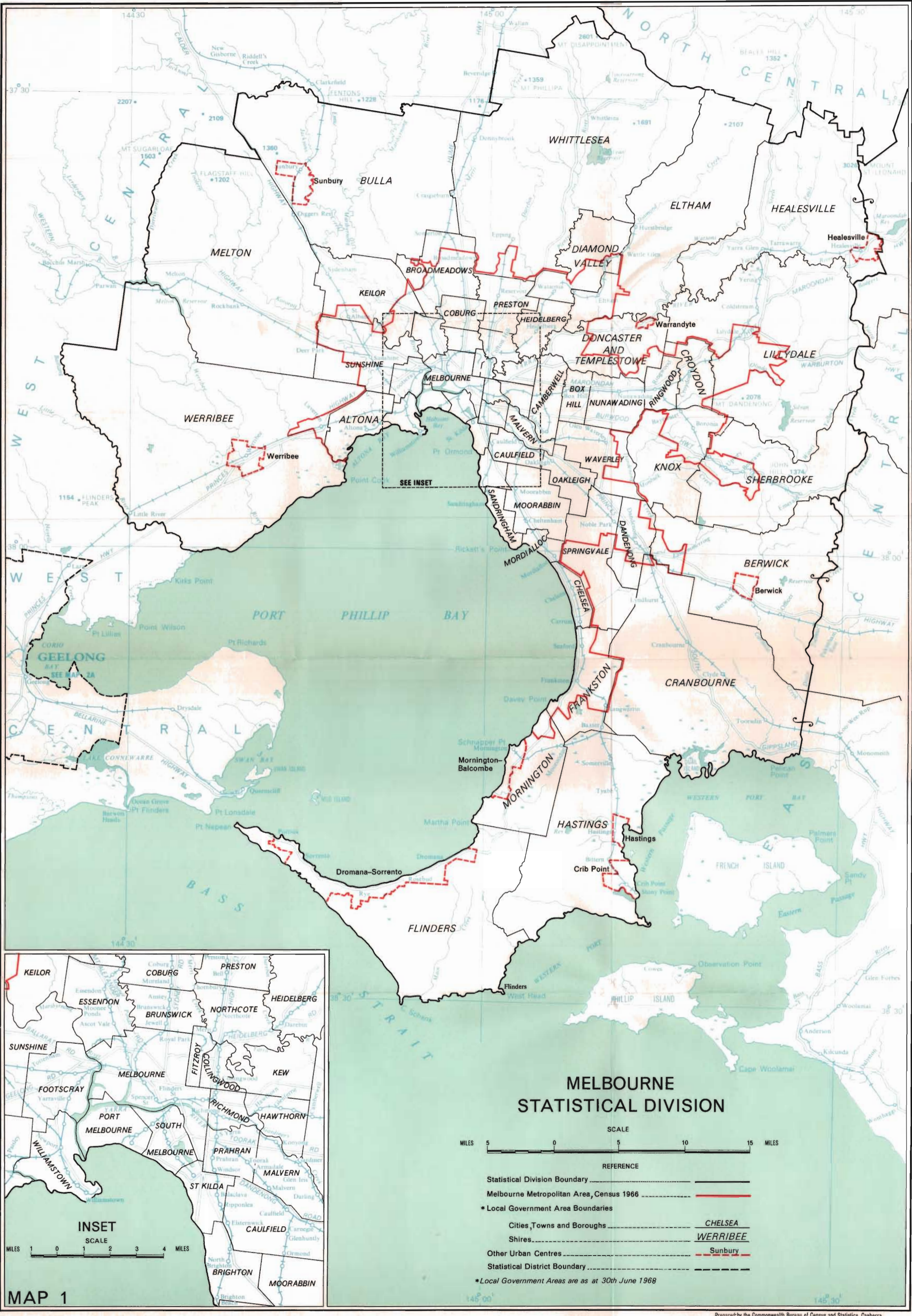
#### *Dandenong District*

Mr L. S. Reid resigned on 18 September 1969 to contest a House of Representatives seat. At a by-election on 6 December 1969 Mr Alan Alfred Campbell Lind (*ALP*) was elected in his stead.

### National Wage Case, 1969

(23) *National Wage Case*, 1969.—The following judgments were handed down :

- (a) The rates in Clause 3 of Part 1 of the Metal Trades Award, namely the minimum wage for adult males, was increased by \$3.50 per week.
- (b) The rates for males and females appearing generally in Clause 4 of Part 1 of the Metal Trades Award was increased by 3 per cent in each case.
- (c) The variations operated from the first pay period to commence on or after 19 December 1969 and were to remain in force until 30 September 1970.
- (d) The increases could be applied to other awards depending upon decisions of the arbitrators.



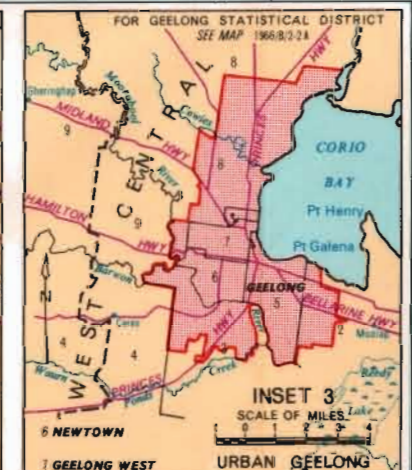
MAP 1



1966 CENSUS  
STATISTICAL DIVISIONS  
OF  
VICTORIA

SCALE  
MILES 0 10 20 30 40 50

- REFERENCE
- Statistical Division Boundaries  MALLEE
  - Geelong Statistical District Boundary
  - Local Government Areas
  - Cities, Towns and Boroughs  COLAC 155
  - Shires  137
  - Urban Centres
    - Major Urban Centres
    - Other Urban Centres  Orbest O
  - Localities
    - 500-999 Persons  Dunolly D
    - 100-499 Persons  Barmahook B
    - Other Localities  Falls Creek F
  - Unincorporated Areas  U
  - Elevations in Feet 0816\*
- \* Local Government Areas are as at 30 June 1968  
 \*\* Urban centres are concentrations of 1,000 persons or more, or holiday resorts which have 250 dwellings or more. (See Field Count Statements 4 and 7, or Census Bulletin 2.8 for a detailed explanation of urban criteria used in the 1966 Census.)  
 † Non-farm population.  
 See overleaf for numerical and alphabetical indexes to Local Government Areas.



# INDEX TO LOCAL GOVERNMENT AREAS

T = Town      B = Borough      S = Shire

## NUMERICAL INDEX

## ALPHABETICAL INDEX

### WEST CENTRAL

QUEENSLIFFE B.	1
BELLARINE S.	2
SOUTH BARWON S.	3
BARRABOOL S.	4
GEELONG, CITY OF	5
NEWTOWN, CITY OF	6
GEELONG WEST, CITY OF	7
CORIO S.	8
BANNOCKBURN S.	9
BUNINYONG S.	10
BUNGAREE S.	11
BALLAN S.	12
BACCHUS MARSH S.	13
GISBORNE S.	14
ROMSEY S.	15
KILMORE S. (PART)	16

### NORTH CENTRAL

BROADFORD S.	17
KILMORE S. (PART)	18
PYALONG S.	19
NEWHAM & WOODEND S.	20
KYNETON S.	21
DAYLESFORD & GLENLYON S.	22

CRESWICK S.	23
TALBOT & CLUNES S.	24
MARYBOROUGH, CITY OF	25
TULLAROOP S.	26
NEWSTEAD S.	27
MALDON S.	28
CASTLEMAINE, CITY OF	29
METCALFE S.	30
McIVOR S.	31
SEYMOUR S.	32
YEA S.	33
ALEXANDRA S.	34

### EAST CENTRAL

HEALESVILLE S. (PART)	35
UPPER YARRA S.	36
BERWICK S. (PART)	37
CRANBOURNE S. (PART)	38
BASS S.	39
PHILLIP I. S.	40
WONTHAGGI B.	41
KORUMBURRA S.	42

### GIPPSLAND

WARRAGUL S.	43
BULN BULN S.	44
NARRACAN S.	45
MOE, CITY OF	46
YALLOURN WORKS AREA	47
MORWELL S.	48
MIRBOO S.	49
WOODRAY S.	50
SOUTH GIPPSLAND S.	51
ALBERTON S.	52

TRARALGON S.	53
TRARALGON, CITY OF	54
ROSEDALE S.	55
SALE, CITY OF	56
MAFFRA S.	57
AVON S.	58
BAIRNSDALE S.	59
BAIRNSDALE T.	59A
ORBOST S.	60
TAMBO S.	61

### NORTH EASTERN

OMEO S.	62
UPPER MURRAY S.	63
TOWONG S.	64
BRIGHT S.	65
YACKANDANDAH S.	66
WODONGA S.	67
CHILTERN S.	68
RUTHERGLEN S.	69
WANGARATTA S.	70
WANGARATTA, CITY OF	71
BEECHWORTH S.	72
MYRTLEFORD S.	73
OXLEY S.	74
MANSFIELD S.	75
BENALLA S.	76
BENALLA, CITY OF	77
VIOLET TOWN S.	78
EUROA S.	79

### NORTHERN

SHEPPARTON S.	80
SHEPPARTON, CITY OF	81
TUNGAMAH S.	82
YARRAWONGA S.	83
COBRAM S.	84
NUMURKAH S.	85
NATHALIA S.	86
KYABRAM B.	87
RODNEY S.	88
GOULBURN S.	89
WARANGA S.	90
DEAKIN S.	91
ECHUCA, CITY OF	92
ROCHESTER S.	93
EAST LODDON S.	94
HUNTLY S.	95
STRATHFIELDSAYE S.	96
BENDIGO, CITY OF	97
EAGLEHAWK B.	98
MARONG S.	99
BET BET S.	100
KORONG S.	101
CHARLTON S.	102
GORDON S.	103
COHUNA S.	104
KERANG B.	105
KERANG S.	106

### MALLEE

SWAN HILL, CITY OF	107
SWAN HILL S.	108
MILDURA, CITY OF	109
MILDURA S.	110
WALPEUP S.	111
KARKAROOC S.	112
WYCHEPROOF S.	113
BIRCHIP S.	114

### WIMMERA

DONALD S.	115
WARRACKNABEAL S.	116
DIMBOOLA S.	117
LOWAN S.	118
KANIVA S.	119
KOWREE S.	120
WODONGA S.	121
HORSHAM, CITY OF	122
WIMMERA S.	123
DUNMUNKLE S.	124
STAWELL S.	125
STAWELL T.	126
KARA KARA S.	127
ST. ARNAUD T.	128
AVOCA S.	129

### WESTERN

LEXTON S.	130
BALLARAT S.	131
BALLAARAT, CITY OF	132
SEBASTOPO B.	133
GRENVILLE S.	134
RIPON S.	135
ARARAT, CITY OF	136
ARARAT S.	137
MOUNT ROUSE S.	138
DUNDAS S.	139
HAMILTON, CITY OF	140
WANNON S.	141
GLENELG S.	142
PORTLAND S.	143
PORTLAND T.	144
MINHAMITE S.	145
BELFAST S.	146
PORT FAIRY B.	147
KOROIT B.	148
WARRNAMBOOL, CITY OF	149
WARRNAMBOOL S.	150
MORTLAKE S.	151
HAMPDEN S.	152
CAMPERDOWN T.	153
HEYTESBURY S.	154
OTWAY S.	155
COLAC, CITY OF	156
COLAC S.	157
WINCHELSEA S.	158
LEIGH S.	159

ALBERTON S.	52
ALEXANDRA S.	34
ARAPILES S.	121
ARARAT, CITY OF	136
ARARAT S.	137
AVOCA S.	129
AVON S.	58

BACCHUS MARSH S.	13
BAIRNSDALE S.	59
BAIRNSDALE T.	59A
BALLAN S.	12
BALLAARAT, CITY OF	132
BALLARAT S.	131
BANNOCKBURN S.	9
BARRABOOL S.	4
BASS S.	39
BEECHWORTH S.	72
BELFAST S.	146
BELLARINE S.	2
BENALLA, CITY OF	77
BENALLA S.	76
KYABRAM B.	97
BERWICK S.	37
BET BET S.	100
BIRCHIP S.	114
BRIGHT S.	65
BROADFORD S.	17
BULN BULN S.	44
BUNGAREE S.	11
BUNINYONG S.	10
CAMPERDOWN T.	153
CASTLEMAINE, CITY OF	29
CHARLTON S.	102
CHILTERN S.	68
COBRAM S.	84
COHUNA S.	104
COLAC, CITY OF	156
COLAC S.	157
CORIO S.	8
CRANBOURNE S.	38
CRESWICK S.	23

DAYLESFORD & GLENLYON S.	22
DEAKIN S.	91
DIMBOOLA S.	117
DONALD S.	115
DUNDAS S.	139
DUNMUNKLE S.	124
EAGLEHAWK B.	98
EAST LODDON S.	94
ECHUCA, CITY OF	92
EUROA S.	79
GEELONG, CITY OF	5
GEELONG WEST, CITY OF	7
GISBORNE S.	14
GLENELG S.	142

GORDON S.	103
GOULBURN S.	89
GRENVILLE S.	134
HAMILTON, CITY OF	140
HAMPDEN S.	152
HEALESVILLE S.	35
HEYTESBURY S.	154
HORSHAM, CITY OF	122
HUNTLY S.	95

KANIVA S.	119
KARA KARA S.	127
KARKAROOC S.	112
KERANG B.	105
KERANG S.	106
KILMORE S.	18
KOROIT B.	148
KORONG S.	101
KORUMBURRA S.	42
KOWREE S.	120
KYABRAM B.	87
KYNETON S.	21
LEIGH B.	159
LEXTON S.	130
LOWAN S.	118

MAFFRA S.	57
MALDON S.	28
MANSFIELD S.	75
MARONG S.	99
MARYBOROUGH, CITY OF	25
McIVOR S.	31
METCALFE S.	30
MILDURA, CITY OF	109
MILDURA S.	110
MINHAMITE S.	145
MIRBOO S.	49
MOE, CITY OF	46
MORTLAKE S.	151
MORWELL S.	48
MOUNT ROUSE S.	138
MYRTLEFORD S.	73

NARRACAN S.	45
NATHALIA S.	86
NEWHAM & WOODEND S.	20
NEWSTEAD S.	27
NEWTOWN, CITY OF	6
NUMURKAH S.	85
OMEO S.	62
ORBOST S.	60
OTWAY S.	155
OTWAY S.	74
PHILLIP I. S.	40
PORT FAIRY B.	147

PORTLAND S.	143
PORTLAND T.	144
PYALONG S.	19

QUEENSLIFFE B.	1
RIPON S.	135
ROCHESTER S.	93
RODNEY S.	88
ROMSEY S.	15
ROSEDALE S.	55
RUTHERGLEN S.	69
ST. ARNAUD T.	128
SALE, CITY OF	56
SEBASTOPO B.	133
SEYMOUR S.	32
SHEPPARTON, CITY OF	81
SHEPPARTON S.	80
SOUTH BARWON S.	3
SOUTH GIPPSLAND S.	51
STAWELL S.	125
STAWELL T.	126
STRATHFIELDSAYE S.	96
SWAN HILL, CITY OF	107
SWAN HILL S.	108

TALBOT & CLUNES S.	24
TAMBO S.	61
TOWONG S.	64
TRARALGON, CITY OF	54
TRARALGON S.	53
TULLAROOP S.	26
TUNGAMAH S.	82
UPPER MURRAY S.	63
UPPER YARRA S.	36
VIOLET TOWN S.	78

WALPEUP S.	111
WANGARATTA, CITY OF	71
WANGARATTA S.	70
WANNON S.	141
WARANGA S.	90
WARRACKNABEAL S.	116
WARRAGUL S.	43
WARRNAMBOOL, CITY OF	149
WARRNAMBOOL S.	150
WIMMERA S.	123
WINCHELSEA S.	158
WODONGA S.	67
WONTHAGGI B.	41
WOODRAY S.	50
WYCHEPROOF S.	113
YACKANDANDAH S.	66
YALLOURN WORKS AREA	47
YARRAWONGA S.	83
YEA S.	33